

Tower Rooms (Rooms 2269, 3269, 4269, 5269)

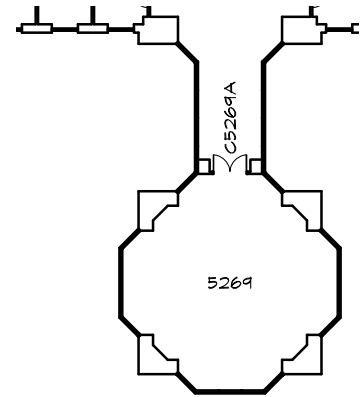
Location 2nd, 3rd, 4th, and 5th floor, south end

Dimensions 38 x 38 feet

Cost \$150 (2269, 3269, 4269); \$350 (5269)

Room Arrangements

- 2269 Theater-style only, seats 60
- 3269 Herringbone/classroom only, seats 42
- 4269 U-shape with wings, seats 24 (+ -) 12
- 5269 All three arrangements as above
dining rounds, seats 48,
reception area, allows 75



Equipment

- Permanently installed LCD projectors;
- A VGA connector in the front of room that accepts output from computer;
- No screen or projector for 5269.

Room 5602

Location 5th floor, north end

Dimensions 30 x 55 feet

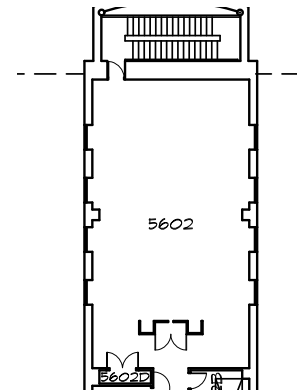
Cost \$350

Room Arrangements

- Dining or conference rounds, seats 72
- Herringbone/classroom, seats 60
- Theater style, seats 100
- U-shape conference style, seats 36
- Reception area, allows 113

Equipment

- Single speaker, single wireless-lapel-microphone sound system;
- LCD projector.



Room 1005

Location 1st floor, west end

Dimensions 30 x 60 feet

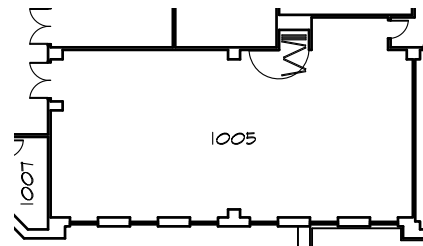
Cost \$300

Room Arrangements

- Dining or conference rounds, seats 80
- Herringbone/classroom, seats 60
- Theater style, seats 110
- U-Shape conference style, seats 36
- Reception area, allows 125

Equipment

- Projection screen at the east end;
- LCD projector is ceiling mounted, with a video connector for connection to a presenter's computer;
- Audio from the presenter's computer or from a lapel microphone can be sent to the ceiling-mounted speakers located throughout the room;
- Connected to video and audio signal in auditorium, making it the auditorium overflow room.



Multimedia Technology Room (Room 1227)

Location 1st floor, south end

Dimensions 25 x 27 feet

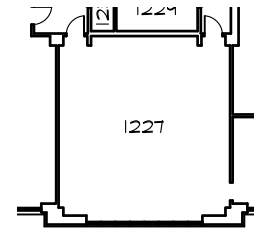
Cost \$50/hr

Room Arrangement

- Herringbone style, seats 20
- No food or beverages are allowed in this room

Equipment

- State-of-the-art presentation facility for meetings that require advanced videoconferencing or high-resolution multi-video-display presentations;
- Perfect for meetings requiring high-end technology not available elsewhere;
- Two 60-inch plasma displays;
- HD projector;
- Polycom HDX offering single and multiple site connectivity utilizing EagleEye intelligent, auto-zooming cameras for a fully automated system;
- Ability to share digital content (PowerPoint presentations, Excel spreadsheets, etc.) with remote sites or incorporate live video in presentations;
- Speaker's podium allows for the connection of one or more laptops and provides touch panel control of room facilities.



Auditorium (Room 1025)

Location 1st floor, west end

Dimensions seating: 50 x 50 feet; stage: 14 x 34 feet

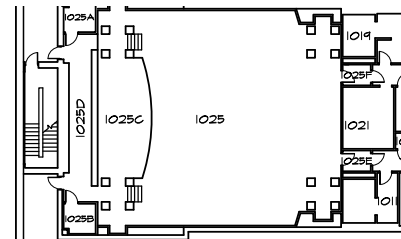
Cost \$400/two hours; \$125 for each additional hour

Room Arrangement

- Theater style, seats 232
- No food or beverages are allowed in this room

Equipment

- For major lectures and colloquia and as a site of plenary sessions for conferences and workshops;
- Large meeting room (1005) adjacent to the auditorium to host overflow; connected to the audio and video display systems of the auditorium;
- HD, ultra-powerful projector located in a projection room to the rear of the auditorium;
- Connectors are provided on the stage to connect to laptops for a variety of needs;
- Audio console capable of accepting 24 audio inputs and a control room monitoring output;
- Four wireless microphone systems that can be any combination of hand-held or lavalier microphones and they function anywhere in the auditorium, allowing sound pick-up from within the audience;
- Up to five additional hard-wired microphones can also be utilized on the stage;
- Four corner-mounted powered speakers to provide localized sonification;
- Recording of presentations is possible;
- Two channels of audio can be sent to the audio console from connectors on the stage;
- DAT player/recorder, dual cassette player/recorder, DVD player, and CD player are located in the projection room for audio enhancement or recording.



Space reservations

spaceres@beckman.illinois.edu

217-244-8379

beckman.illinois.edu/events/plan/space-reservations

**BECKMAN
INSTITUTE**